

Grounding accessories

1/4

Pay attention on our detailed processing and grounding informations, that are delivered with each of our grounding components, or that you find under www.yshield.com/pdf/YSHIELD-EN-Grounding.pdf

Only skilled electricians listed in the register of your electricity supplier are permitted to execute grounding measures! Pay attention to the following points: Protective measures against electric shock to DIN 57100/VDE 0100 part 410 + part 540, grounding to DIN/VDE 0100 part 410 + part 540, visual inspection and process testing to DIN/VDE 0100 part 610 part 4+5 and EMC to VDE 0100. **Grounding measures are only permitted in TNS or TT networks! Grounding measures may never be executed in network forms with combined PEN wiring! A leakage/fault circuit breaker (FI / RCD) with less than 30 mA must be installed.** If possible, a FI / RCD with 10 mA has to be retrofitted! **Proper grounding sequence:** • With a 4 mm² cable (16 mm² for facade shielding) directly at the potential equalization. • With a 2.5 mm² cable direct at the PE lead in the electric installation, or with ESW+, ESS or EPS in a power socket. • At a (heating) pipe that is connected to the potential equalization. Check the low impedance! Install a decal information in the heating room that indicates to the shielding!



Many of our grounding components and products can be directly connected to each other with our grounding cables EK! We use stiff closing, very stable sockets and press studs normally used in the boat-building. If stipulated by local grounding rules, the plugs can be mechanically fixed. **One system: From the heating pipe to the wall plate to the canopy to the floor mat, etc.**

YSHIELD Grounding set ESW

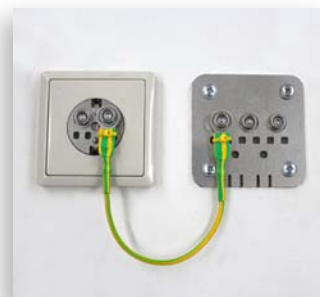
Grounding set for shielding paints, nettings, fleeces, etc. in the interior. For each continuous connected area one grounding set is required! When required, the 2 free sockets can be connected with our grounding cables EK to floor mats, canopies, etc. • Metal plate 80 x 80 x 3 mm with conductive fleece backside; • 3 grounding sockets; • Screws, dowels / wall plugs \varnothing 6 mm; 1 m grounding cable \varnothing 2.5 mm² (EK100);



YSHIELD Grounding set ESW+

Complete set to ground wall shieldings direct in a CEE-7/4 power socket.

Scope of supply and details, see grounding set **ESW** and grounding plug **ESS/EPS**.



Grounding accessories

2/4

YSHIELD Grounding set ESV

Grounding set for loosely laid nettings, fleeces, etc. The free grounding plug can be connected to an already in the room installed EPW, EPR or ES-74. • 2 metal plates 40 x 40 x 3 mm with conductive fleece backside; • 5 m cable 2.5 mm² with 2 grounding plugs (EK500);



YSHIELD Grounding set ESR

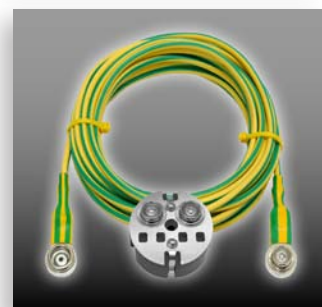
Grounding set to connect other grounding components and groundable products to (heating) pipes. Stable, unshakeable construction to connect EPW, EPV, canopies, floor mats, etc. • Metal plate 70 x 35 x 3 mm with conductive fleece backside; • 2 worm drive clamps for typical pipe diameters from 12 mm to 25 mm; • 5 m cable 2.5 mm² with 2 grounding plugs (EK500);



YSHIELD Grounding set ESS

Grounding set to connect other grounding components and groundable products to CEE-7/4 power sockets. The plug is screwed into the the power socket mechanically stable together with the socket cover.

• Only for the following countries with CEE-7/4 power sockets and TNS or TT networks: Afghanistan, Algeria, Andorra, Bosnia and Herzegovina, Bulgaria, **Germany**, Estonia, Finland, **Greece**, Indonesia, Island, Croatia, Latvia, Lithuania, Luxembourg, Macedonia, Montenegro, Moldova, **Netherlands**, **Norway**, **Austria**, Portugal, Romania, Russia, Sweden, Serbia, Slovenia, **Spain**, South Korea, Ukraine, **Hungary**; • Only skilled electricians are permitted to put and screw this plug into a power socket! • Suitable only in TNS or TT networks with an installed leakage / fault circuit breaker (FI / RCD)! • Grounding plug for CEE-7/4 power sockets; • Screws for common power sockets; • 5 m cable 2.5 mm² with 2 grounding plugs (EK500);



YSHIELD Grounding set ESA

Grounding set for shielding paints in the exterior. For each continuous connected area two grounding-sets are required! • Metal plate 80 x 80 x 3 mm with conductive fleece backside; • Waterproof box plus special-glue for bonding to the underground; • Screws, dowels / wall plugs ø 6 mm, grounding cable 16 mm² with waterproof shrink tubing to lengthen the cable; • Cable length 20 cm;



Grounding accessories

3/4

YSHIELD Grounding plug EST

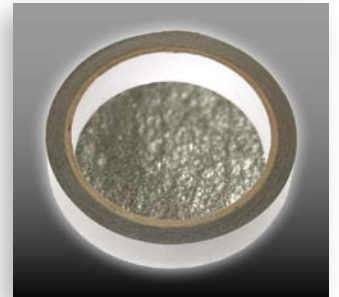
Grounding plug for loosely laid nettings, fleeces and canopies.

The plug becomes mechanically fixed due to the locking latch and can thus only be removed by using a screwdriver. ● Only for the following countries: Austria, Belgium, **Denmark**, Finland, **France**, Germany, Italy, Netherlands, Norway, Sweden. ● Only skilled electricians are permitted to put this plug into a power socket! ● Suitable only in TNS or TT networks with an installed leakage / fault circuit breaker (FI / RCD)! ● 2 metal plates 40 x 40 x 3 mm with conductive fleece backside; ● Cable length 5 m;



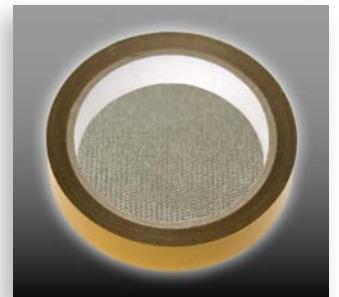
YSHIELD Grounding strap EB

Self-adhesive grounding strap with conductive glue for application under and over nettings, fleeces. On basis of our fleece HNV80. To electrically connect the limited width of the materials. The strap sticks relatively poor on difficult undergrounds (e.g. plasterboards), they have to be pretreated with a primer. ● Adhesive force 3 N/cm. ● Self-adhesive, corrosion resistant, width 2 cm, thickness 0.1 mm, length 10 m;



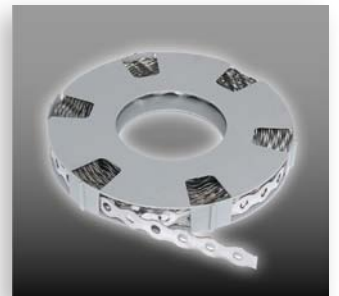
YSHIELD Grounding strap EB2

Self-adhesive grounding strap with non-conductive glue for application under shielding paints. On basis of our netting HNG80. To bridge cracks in the underground. The strap sticks very well even on difficult undergrounds when painting over. ● Adhesive force 10 N/cm. ● Self-adhesive, corrosion resistant, width 2 cm, thickness 0.2 mm, length 10 m;



Perforated stainless steel tape ELB

Grounding tape for stainless steel gauzes under plaster or at drywall constructions. To connect the single elements, this steel tape is fixed often as possible across the single elements on the underground, especially on the overlapping locations. ● Resistant to corrosion. ● Delivered in a convenient unwinding box. ● Length 10 m, width 1.4 cm, thickness 0.7 mm, hole spacing 16 mm, hole diameter 6 mm;

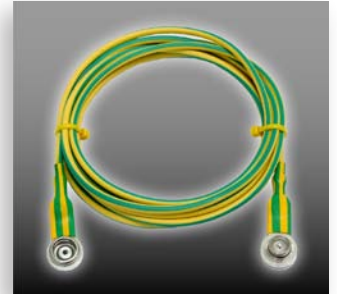


Grounding accessories

4/4

YSHIELD Grounding cables EK

Grounding cable to connect our grounding components and groundable products with each other. To connect e.g.: EPV with an already installed EPW or EPR, a floor mat with EPW or EPR, two floor mats to each other, groundable canopies with EPW or EPR, etc. • Available lengths: **EK20 (20 cm), EK100 (1 m) EK200 (2 m), EK500 (5 m), EK1000 (10 m);**



YSHIELD Grounding plate EPW

Grounding plate for shielding paints, nettings, fleeces, etc. in the interior. Like ESW, but only the plate plus the mounting accessories are delivered! Recommended when a cable EK is already available! • Metal plate 80 x 80 x 3 mm with conductive fleece backside; • 3 grounding sockets; • Screws, dowels / wall plugs \varnothing 6 mm;



YSHIELD Grounding plate EPV

Grounding plates for loosely laid nettings, fleeces, etc. Like ESV, but only the plates plus the mounting accessories are delivered! Recommended when a cable EK is already available! • 2 metal plates 40 x 40 x 3 mm with conductive fleece backside;



YSHIELD Grounding plate EPR

Grounding plate to connect our grounding components and groundable products to (heating) pipes. Like ESR, but only the plate plus the mounting accessories are delivered! Recommended when a cable EK is already available! • Metal plate 70 x 35 x 3 mm with conductive fleece backside; • 2 worm drive clamps for typical pipe diameters from 12 mm to 25 mm;



YSHIELD Grounding plug EPS

Grounding plug to connect other grounding components and groundable products to CEE-7/4 power sockets. Like ESS, but only the plug is delivered! Recommended when a cable EK is already available! • Grounding plug for CEE-7/4 power sockets; • Screws to fix it together with the power socket cover mechanically stable;

